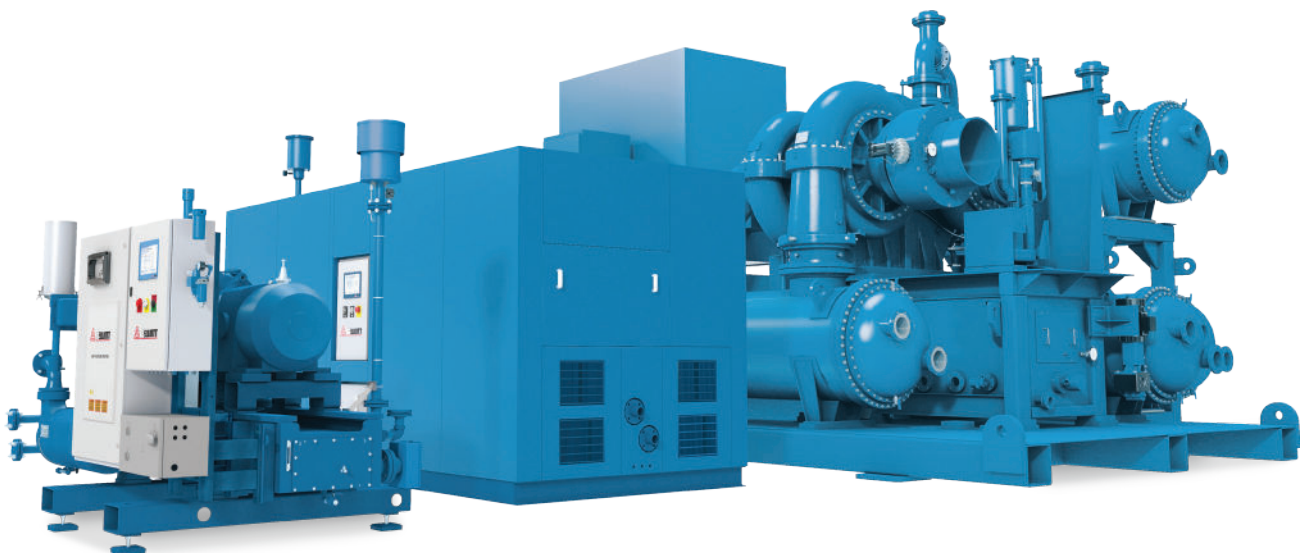


AT A GLANCE

THE FS-ELLIOTT PRODUCT LINE



Adding Value to Your Manufacturing Facility

Few manufacturing operators have the resources to become experts in their compressed air system. When you partner with FS-Elliott, our experts become your experts, and our experience with centrifugal technology allows us to bring the most efficient and reliable means of producing oil-free compressed air possible to your facility. Even in the most demanding environments, an FS-Elliott centrifugal compressor will deliver reliability and significantly reduced energy costs.

Our commitment to providing true value to our customers through quality products and services is the driving force behind all that we do. With that in mind, FS-Elliott promises the highest level of support from a team dedicated to the success of your compressor, from the start of a project to installation and beyond.

That is our promise at FS-Elliott – one we have been keeping for over 50 years.

What we offer our customers:

- **Certified ISO 8573-1 Class 0 Oil-Free Air**
Eliminates the risk of contamination and reduces filter and disposal costs.
- **Low Operating Costs**
Compressor aerodynamics are designed to exact site conditions, delivering best-in-class efficiency.
- **Reliability in the Most Demanding Conditions**
Compressor life expectancy of 20+ years of continuous use, with units currently operating that were installed over 50 years ago.
- **Low Maintenance Design**
Includes only three moving parts, none of which require regular replacement.
- **Predictive Maintenance Expertise and Support**
Available throughout the life of your compressed air; maximizing plant uptime and increasing productivity.
- **Quality OEM Parts and Service**
Lubricants, heat exchangers, airend replacements, and more designed specifically for your machine.

Field-Serviceable Gearbox Features

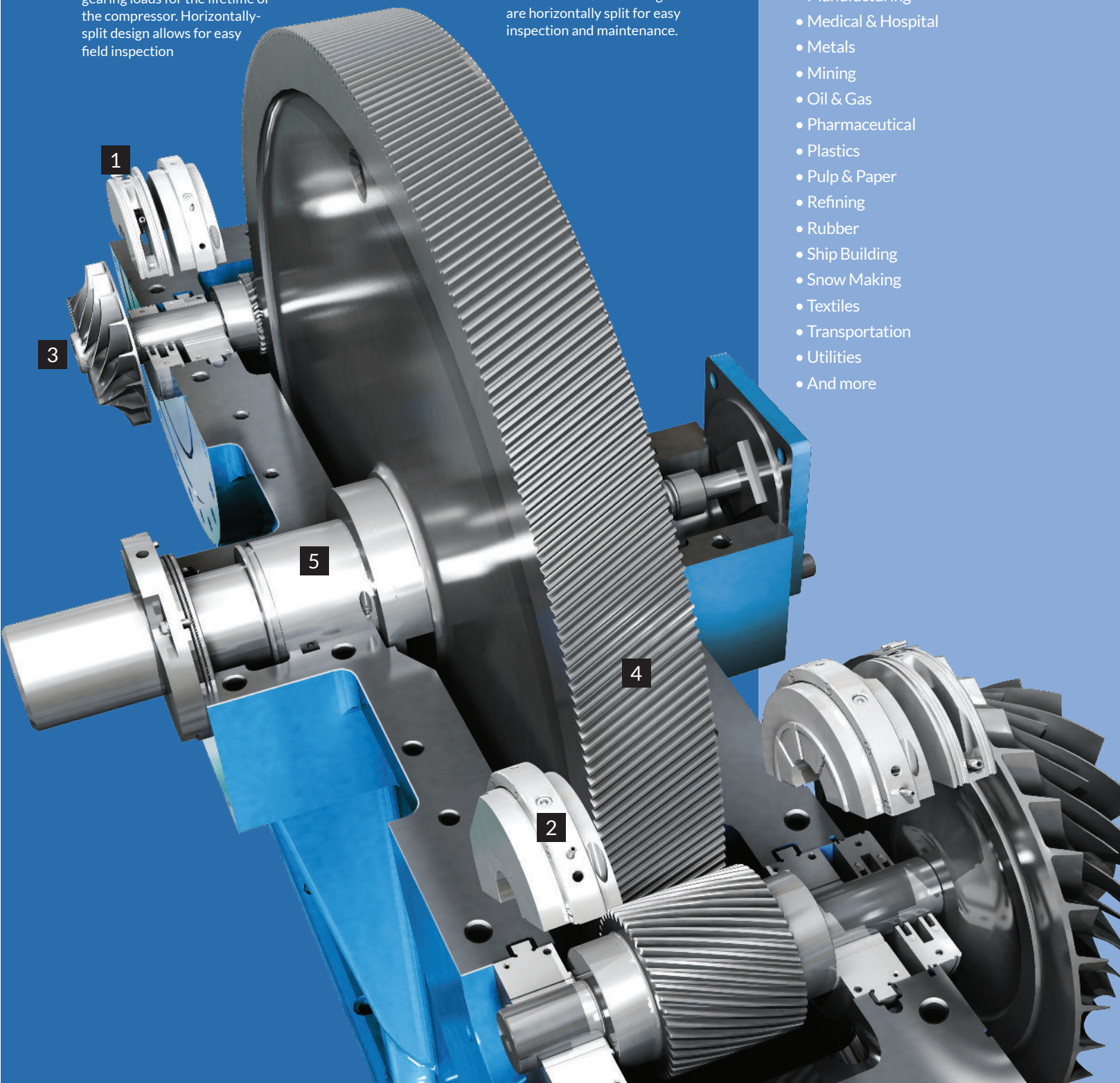
1. Carbon Ring Shaft Seal - Responsible for keeping the oil in the gearbox and out of the compression chamber. The horizontally-split design ensures ease of maintenance.

2. Self-centering, Tilt, or Flex Pad Journal Bearings - Mechanically superior bearings require less oil consumption, reduce power requirements, and are designed to withstand aerodynamic and gearing loads for the lifetime of the compressor. Horizontally-split design allows for easy field inspection

3. Impeller – Customized for each application, the stainless steel, backward leaning impellers resist corrosion leading to longer product life and can be easily controlled to optimize air flow and air compression.

4. Helical Bull Gear – High-precision AGMA Q-13/ISO 1328.2 grade 4 to minimize noise and vibration. Designed to operate at the optimal rotational speed for highest efficiencies

5. Bull Gear Bearings – The combination flat-land thrust bearings and sleeve journal bearings, composed of steel with babbitt lining are horizontally split for easy inspection and maintenance.



Markets & Industries Served

- Air Separation
- Automotive
- Chemical & Petrochemical
- Electronics
- Food & Beverage
- General Industry
- Glass
- Government & Military
- Manufacturing
- Medical & Hospital
- Metals
- Mining
- Oil & Gas
- Pharmaceutical
- Plastics
- Pulp & Paper
- Refining
- Rubber
- Ship Building
- Snow Making
- Textiles
- Transportation
- Utilities
- And more

Compressed Air Solutions



Polaris+® Industrial Compressor Series



P300+

25–60 m³/min (900–2,200 CFM)
185–335 kW (250–450 HP)
2.75–10.5 BARG (40–150 PSIG)



P400+

45–100 m³/min (1,500–3,500 CFM)
190–595 kW (260–800 HP)
2.75–10.5 BARG (40–150 PSIG)



P500+

70–130 m³/min (2,600–4,500 CFM)
450–750 kW (600–1,000 HP)
2.75–10.5 BARG (40–150 PSIG)



P600+

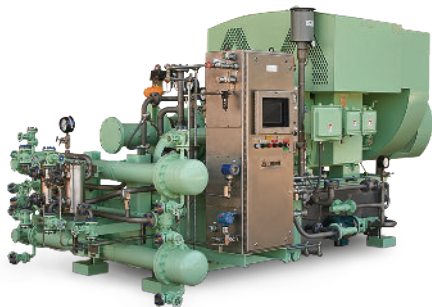
100–200 m³/min (3,500–7,000CFM)
400–1,165 kW (540–1,560 HP)
10.5–14.9 BARG (150–216 PSIG)



P700+

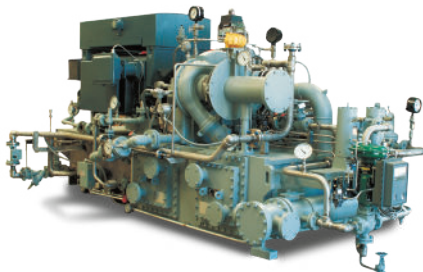
155–340 m³/min (5,500–12,000 CFM)
650–1,940 kW (875–2,600 HP)
10.5–14.3 BARG (150–207 PSIG)

PAP Plus® Engineered Compressor Series



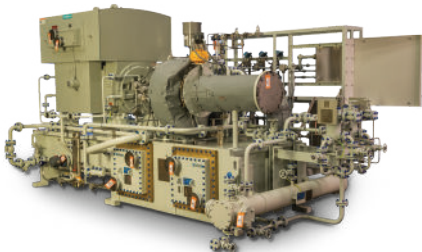
S1

25–60 m³/min (900–2,200 CFM)
120–375 kW (160–500 HP)
2.75–12.1 BARG (40–175 PSIG)



A1

45–100 m³/min (1,500–3,500 CFM)
190–595 kW (260–800 HP)
2.75–15.2 BARG (40–220 PSIG)



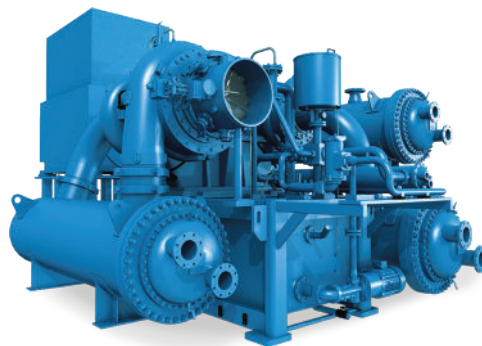
BH

100–200 m³/min (3,500–7,000 CFM)
400–1,165 kW (540–1,560 HP)
2.75–14.9 BARG (40–216 PSIG)



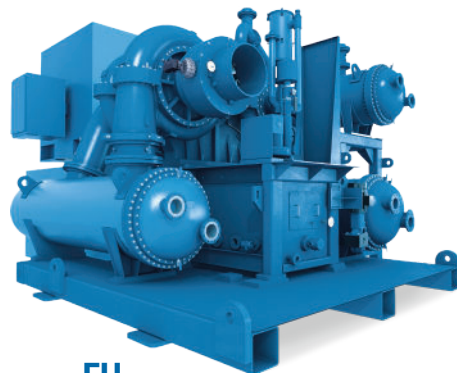
CH

155–340 m³/min (5,500–12,000 CFM)
650–1,940 kW (875–2,600 HP)
2.75–14.3 BARG (40–207 PSIG)



DH

285–525 m³/min (10,000–18,500 CFM)
835–4,100 kW (1,125–5,500 HP)
2.75–31 BARG (40–450 PSIG)



EH

425–695 m³/min (15,000–24,500 CFM)
1,305–4,475 kW (1,750–6,000 HP)
2.75–25.2 BARG (40–365 PSIG)

Regulus® Compressor Control Systems



R1000

Standard Industrial Controller
Meets Industrial Use
Requirements



R2000

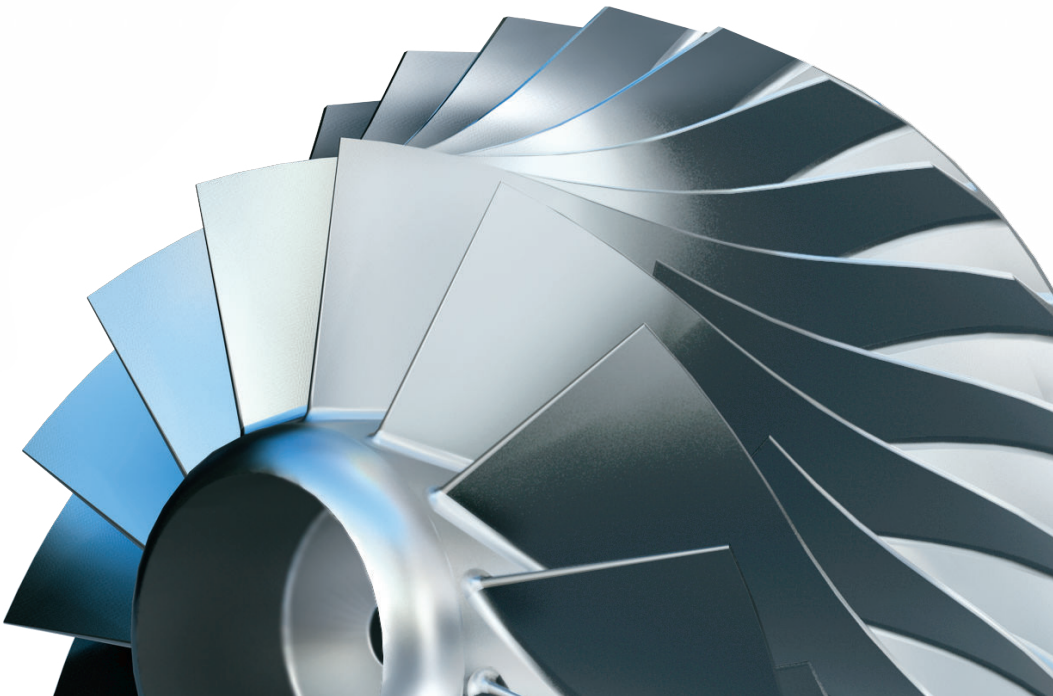
Industrial and Entry-Level Engineered,
PLC-Based Control System
Ideal for Both New Apparatus and
Retrofit Installations



R400

Enhanced Engineered PLC Controller
Fully Customizable Solution
Redundancy Options

For more information on the benefits of an FS-Elliott compressor and to view our complete product line, please visit www.fs-elliott.com.





Headquarters—Export, Pennsylvania, USA

Burham, United Kingdom
Houston, Texas, USA
Jubail, Kingdom of Saudi Arabia
Köngen, Germany
Kuala Lumpur, Malaysia
Los Angeles, California, USA
Pune, India
Shanghai, China
Taipei, Taiwan
Tangerang, Indonesia

Building on a 50-year tradition of excellence in compressor design and manufacturing, FS-Elliott brings our customers the resources of a global industry leader along with the convenience and responsiveness of local sales and service. Thousands of reliable, hard-working FS-Elliott compressors are installed worldwide.

FS-Elliott Co., LLC

5710 Mellon Road
Export, PA 15632-8948, USA
+1.724.387.3200 tel
+1.724.387.3270 fax
info@fs-elliott.com email
www.fs-elliott.com

Represented by:



ISO 9001- certified
for the design and
manufacture of
centrifugal compressors.

FS-Elliott Co., LLC reserves the right to modify the design or construction of the equipment described in this brochure and to furnish it, as altered, without further reference to the illustrations or information contained herein.

Bulletin FSP83-121